

CONSTRUCTION IMPACTS TO TRAFFIC

Arrivals Level - Terminal 2 Nightly Inner Lane Restrictions

Thursday, June 13 through Friday, June 28, 2019

Monday through Friday Only: 12AM to 6AM



ACTIVITY

All Arrivals Level inner lanes at Terminal 2, between Columns 2K and 2H, will be closed nightly beginning Thursday, June 13 through Friday, June 28, Monday through Friday only from 12AM to 6AM. The closure will facilitate the replacement of an underground domestic waterline by the LAWA Utilities and LAMP Enabling Project (LULEP).

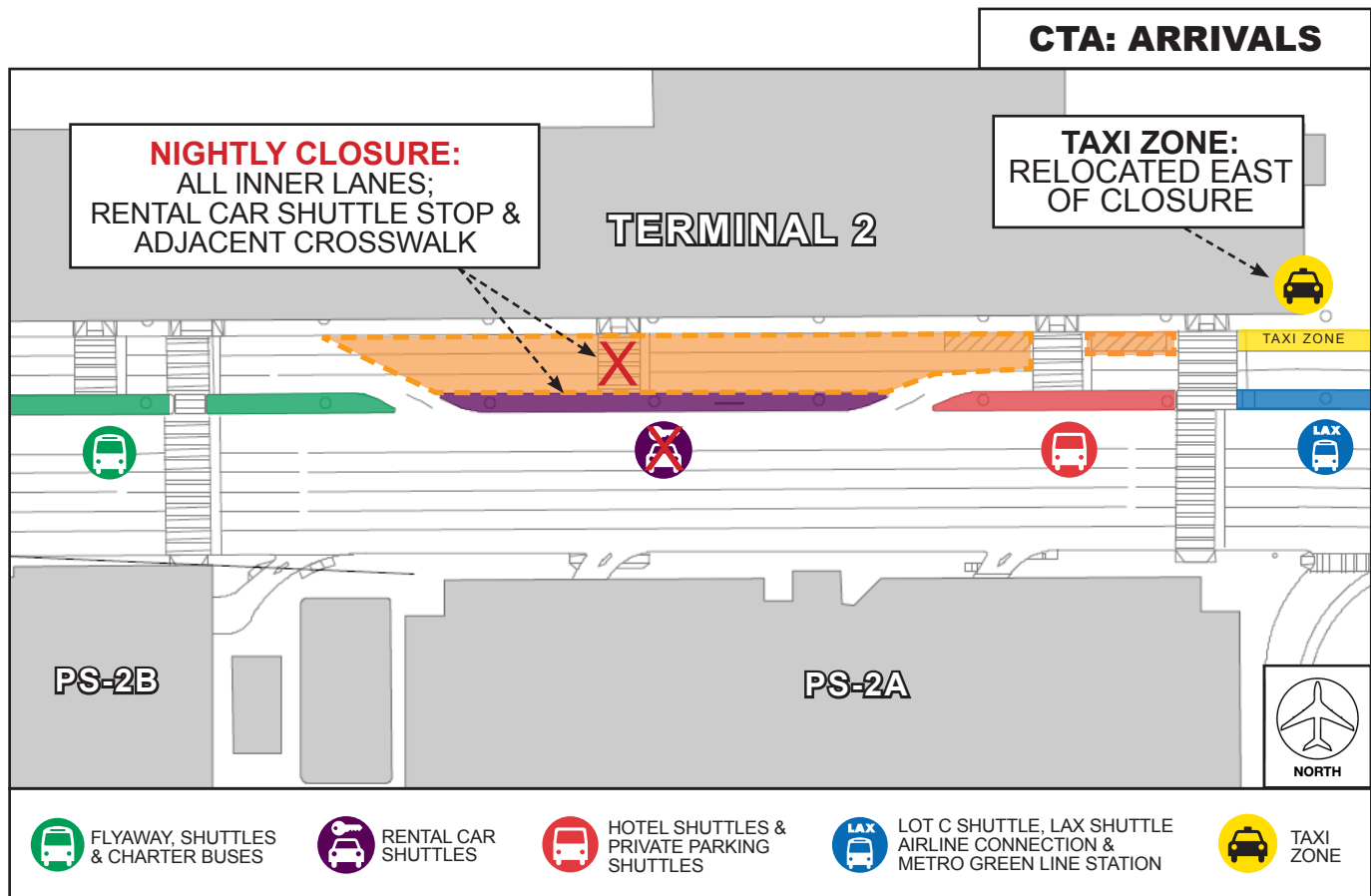
IMPACTS

CLOSED

- All Arrivals Level inner lanes at Terminal 2 between Columns 2K and 2H
- Rental Car Shuttle Stop and adjacent crosswalk at Terminal 2
 - *Signage will be posted to guide pedestrians to next available shuttle stop*

OPEN

- Sidewalk at Terminal 2 will remain open at all times
- Access will be maintained at all times from the Terminals to the Parking Structures
- Taxi Zone at Terminal 2 will be temporarily relocated east of the closure
 - *Signage will be posted to guide pedestrians to the relocated Taxi Zone*



LAX Construction Hotline: 310-649-5292 | [@FlyLAXAirport](https://twitter.com/FlyLAXAirport) | [f](https://www.facebook.com/LAInternationalAirport) LAInternationalAirport
LAXConstructionHotline@LAWA.org